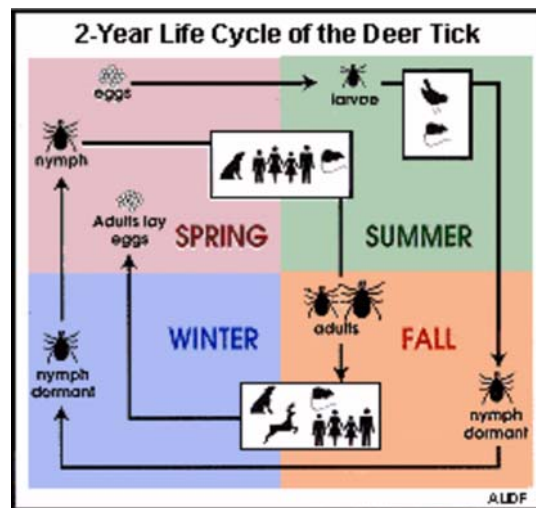


# Deer Tick Life Cycle in the Northeast



**Adults Active:** Fall–Winter–Spring (Sep–Jun) at temps above 40°F even in winter

**Peak Feeding Activity:** October/November and March/April

**Nymphs Active:** Spring–Summer (May–Aug)

**Peak Feeding Activity:** late May through July

Larvae do not transmit Lyme Disease to humans

**Winter:** Adults active above 40°F

Nymphs dormant

**Spring:** Adult feeding peaks

Nymphs become active, begin feeding

**Summer:** Nymph feeding continues

Nymphs molt to adults

**Fall:** Adult feeding peaks

Source: [American Lyme Disease Foundation](http://www.aldf.org) Website